

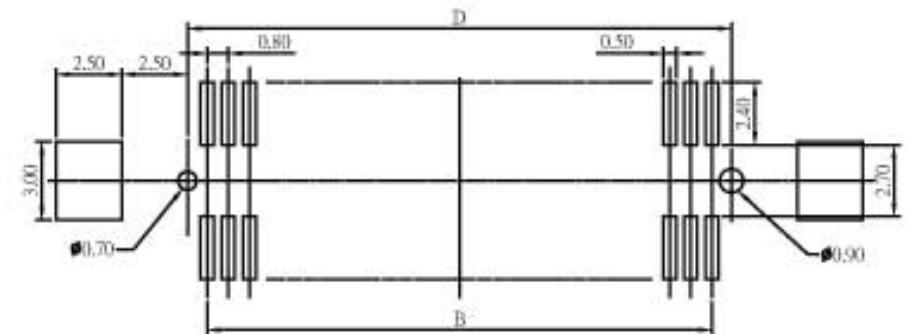
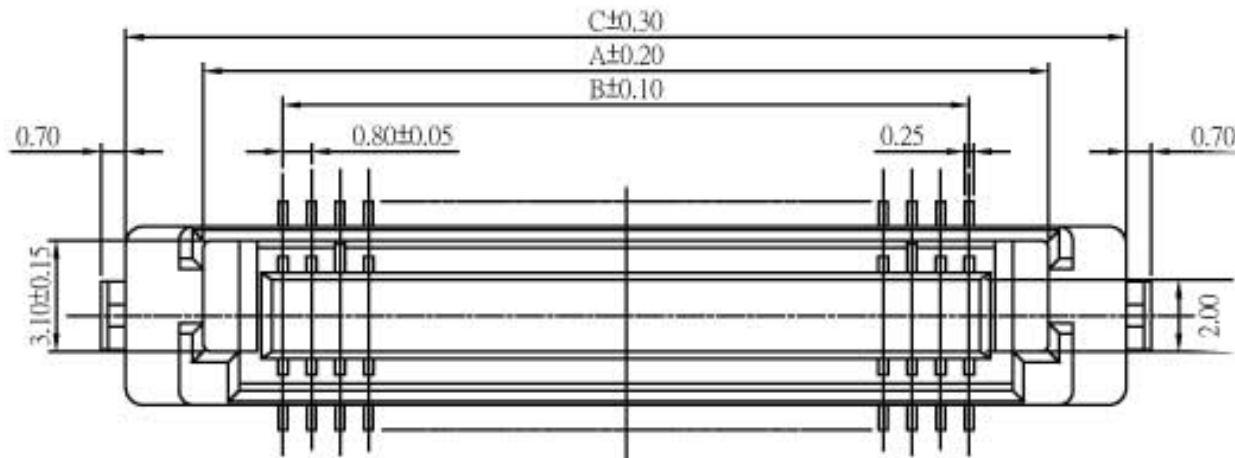
Board To Board Male 0.8mm H=4.4/6.55/9.55mm

Specifications

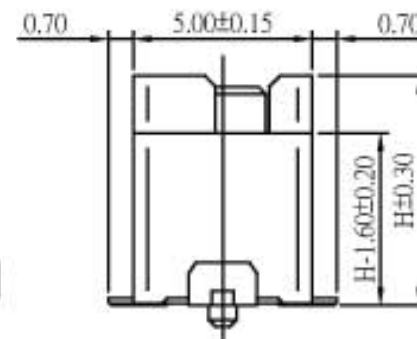
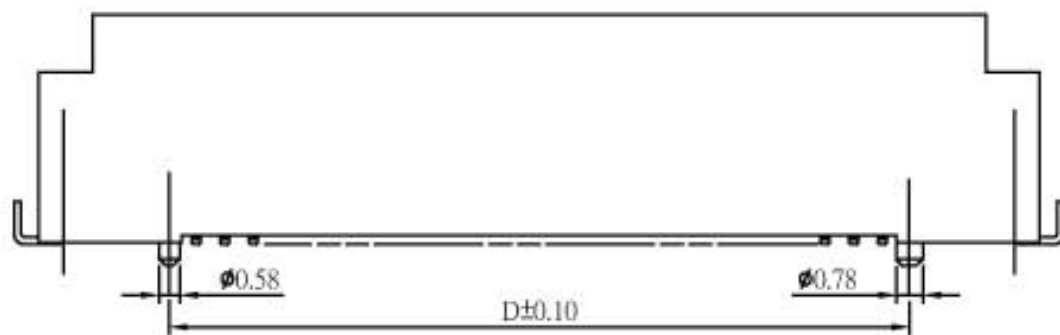
Current Rate: 0.5 AMP
 Insulation Resistance: 100MΩ Min.
 Contact Resistance: 70mΩ Max.
 Dielectric Voltage: 200V AC for one minute
 Operation Temperature: -20°C to +105°C

Material

Insulator: Polyester, UL 94V-0
 ©Standard: LCP
 Terminal: Copper Alloy
 Plating: Gold Plated



Recommended PCB Layout
(PCB TOLERANCE ±0.05)



No. of Contacts	Dim. A	Dim. B	Dim. C	Dim. D
20	11.67	7.20	16.00	8.70
30	15.65	11.20	20.00	12.70
40	19.65	15.20	24.00	16.70
50	23.65	19.20	28.00	20.70
60	27.65	23.20	32.00	24.70